

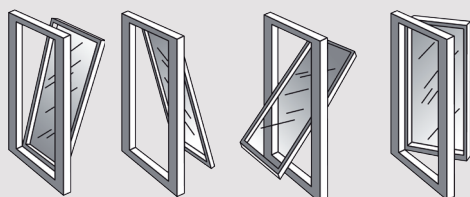
SECO N 24 25

CHAIN DRIVE ACTUATOR 24V dc 250N



250mm, 350mm
(Other strokes are available)

Applications



Features:

A certified and compliant actuator designed to provide precise and reliable operations for natural ventilation systems with the following features :

- Electronically defined closing force ensures a tight close on every operation and a programmable seal relief option to optimises window weather performance in a single enclosure.
- Virtually silent operation with selectable speed control providing accurate position for natural ventilation strategies.
- Slim compact design with standard or tailored finishes and flex lengths.
- Extensive range of bracketry to suit all window system applications.
- Extended warranty/life expectancy with operational frequency logging.



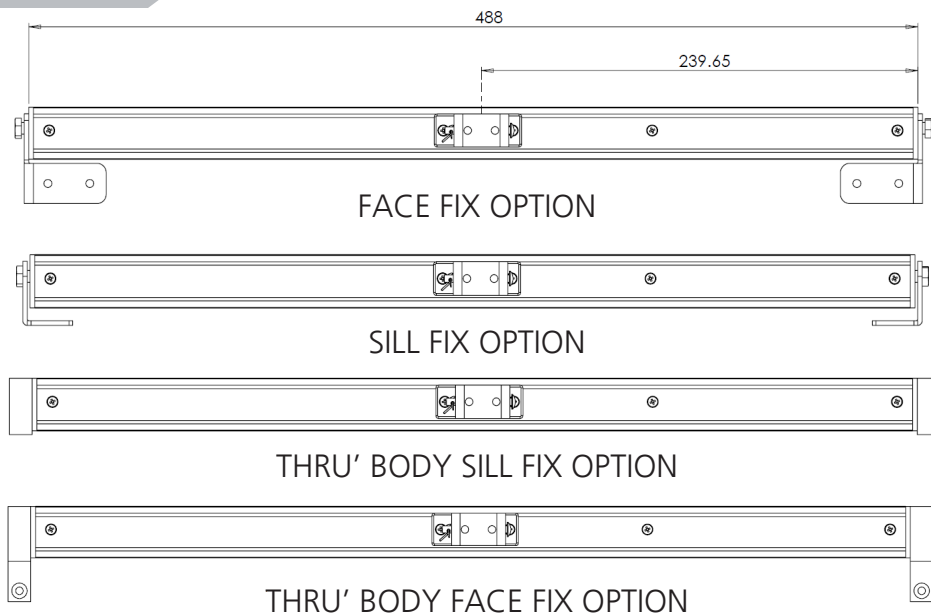
CE CERTIFIED

Compliant to applicable regulations.

SEC_ 4053 08/13

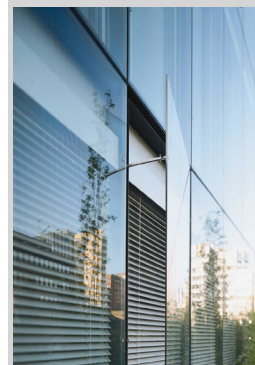
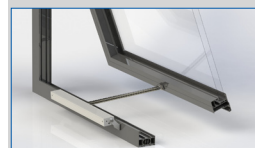
SECO N 24 25

Technical Drawing



The AutoCAD drawing for this product can be found at www.secontrols.com

SE
CONTROLS
secontrols.com



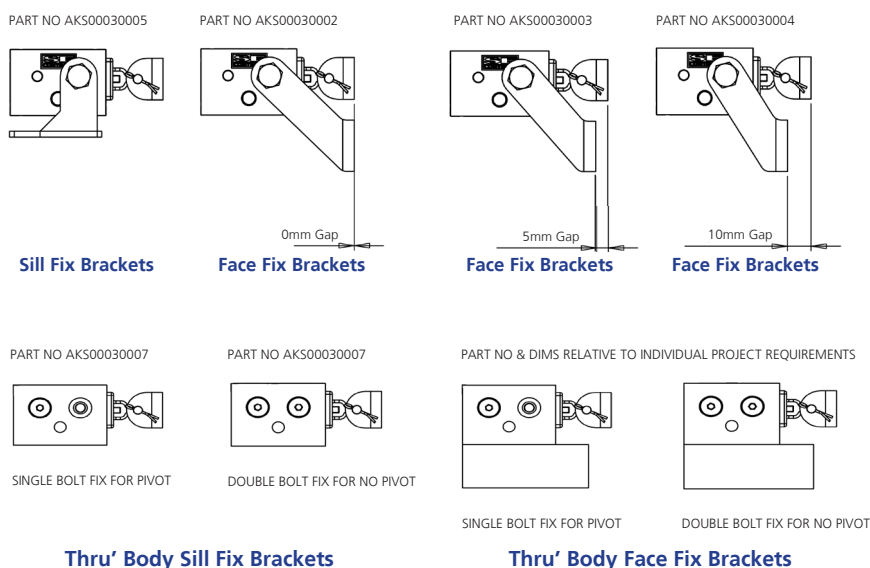
24V dc
250N

Technical Data

ACTUATOR	SECO N 24 25
TYPE	MOTORISED
ACTUATOR TYPE	CHAIN OPENING
DIMENSIONS	29 x 42 x 488
VOLTAGE (all +/-6%)	24V dc
AMP DRAW CURRENT (no load)	<0.5A
AMP DRAW CURRENT (250N load)	<0.5A
STALL CURRENT	1A (for 500mS)
CONSUMPTION (without load)	<12W
CONSUMPTION (with load)	<12W
DB RATING	≤ 4 dB in test chamber condition with background at ≈ 35dB
STROKE	250mm, 350mm other strokes are available*
OPERATING TIME	5mm/sec standard 3 and 7mm/sec also available*
AMBIENT OPERATING TEMP.	-5°C +60°C
THRUST FORCE	250N
CLOSE FORCE	250N
SOFT CLOSE	YES (via adjustable zero point setting)
SEAL RELIEF	Programmable up to 20mm*
CLAMPING FORCE	4000N
SWITCHING	Built in limit switch
TYPE OF SWITCH	Integrated electronic power cut-off
STANDARD FINISH	Powder coated Grey (RAL 9006)
POWER OUT FIXING	YES
FLEX LENGTH	2m
FLEX TYPE	2-core PVC 4 core (volt free contact)*
FLEX COLOUR	Grey
PROTECTION DEGREE	IP20
PRODUCT LIFE	15,000 STROKES
FACE FIX	Yes
THROUGH BODY FIX	YES
PIVOT BRACKET	YES (specify)
OPEN IN	YES (specify)
USAGE	NATURAL VENTILATION

* non standard options are available.

Connections



Product	Operating voltage	Force	Stroke	Colour	Part No
Chain Actuator	24V dc	250N	250mm	SILVER GREY (RAL 9006)	AAS0250250S
	24V dc	250N	350mm	SILVER GREY (RAL 9006)	AAS0250350S

These actuators require control from a compatible low voltage unit such as OS2 or NVLogiQ® PSU and permanent power should not be applied.

SEC_ 4053 08/13